

# Uma Noite e Só

Irapuan Strausz

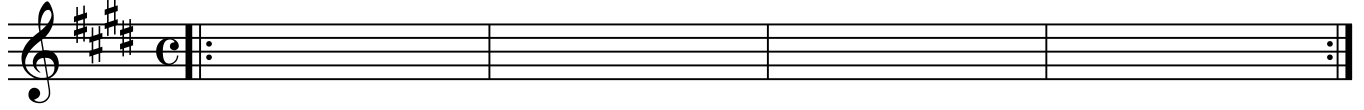
INTRO

E

A7

E

E



A

E

A7

E

E

5

*Repeat 3 times*



B

E

F#7

B7

B7

9



C

E

F#7

E

B7

13



A

E

A7

E

E

17



INTERLUDIO

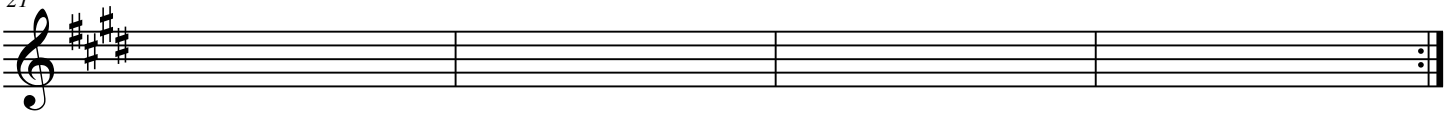
E

A7

E

E

21



SOLO

E

F#7

B7

B7

25



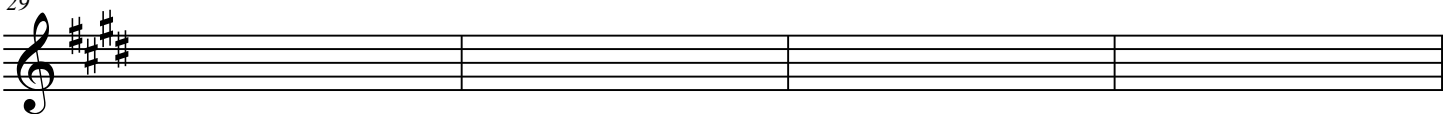
E

F#7

E

B7

29



2

E A7 E E

33

A musical staff in treble clef with a key signature of three sharps (F#, C#, G#). The staff is divided into four measures. The first measure contains a treble clef and the key signature. The remaining three measures are empty.

FINAL

E F#7 E E

37

A musical staff in treble clef with a key signature of three sharps (F#, C#, G#). The staff is divided into four measures. The first measure contains a treble clef and the key signature. The remaining three measures are empty.

E A7 E A7

41

A musical staff in treble clef with a key signature of three sharps (F#, C#, G#). The staff is divided into four measures. The first measure contains a treble clef and the key signature. The remaining three measures are empty.

E F#7 E A7

45

A musical staff in treble clef with a key signature of three sharps (F#, C#, G#). The staff is divided into four measures. The first measure contains a treble clef and the key signature. The remaining three measures are empty.

E E D#7(#9) E 7(#9)

49

A musical staff in treble clef with a key signature of three sharps (F#, C#, G#). The staff is divided into four measures. The first measure contains a treble clef and the key signature. The remaining three measures are empty.